

*Georgia  
on My Mind*

# ANCA Summit 2015

Natural Connections

Elachee Nature Science Center  
Gainesville, GA • August 19-22

# Thank You to our Summit XXI Sponsors



LeadTeam Consulting, LLC

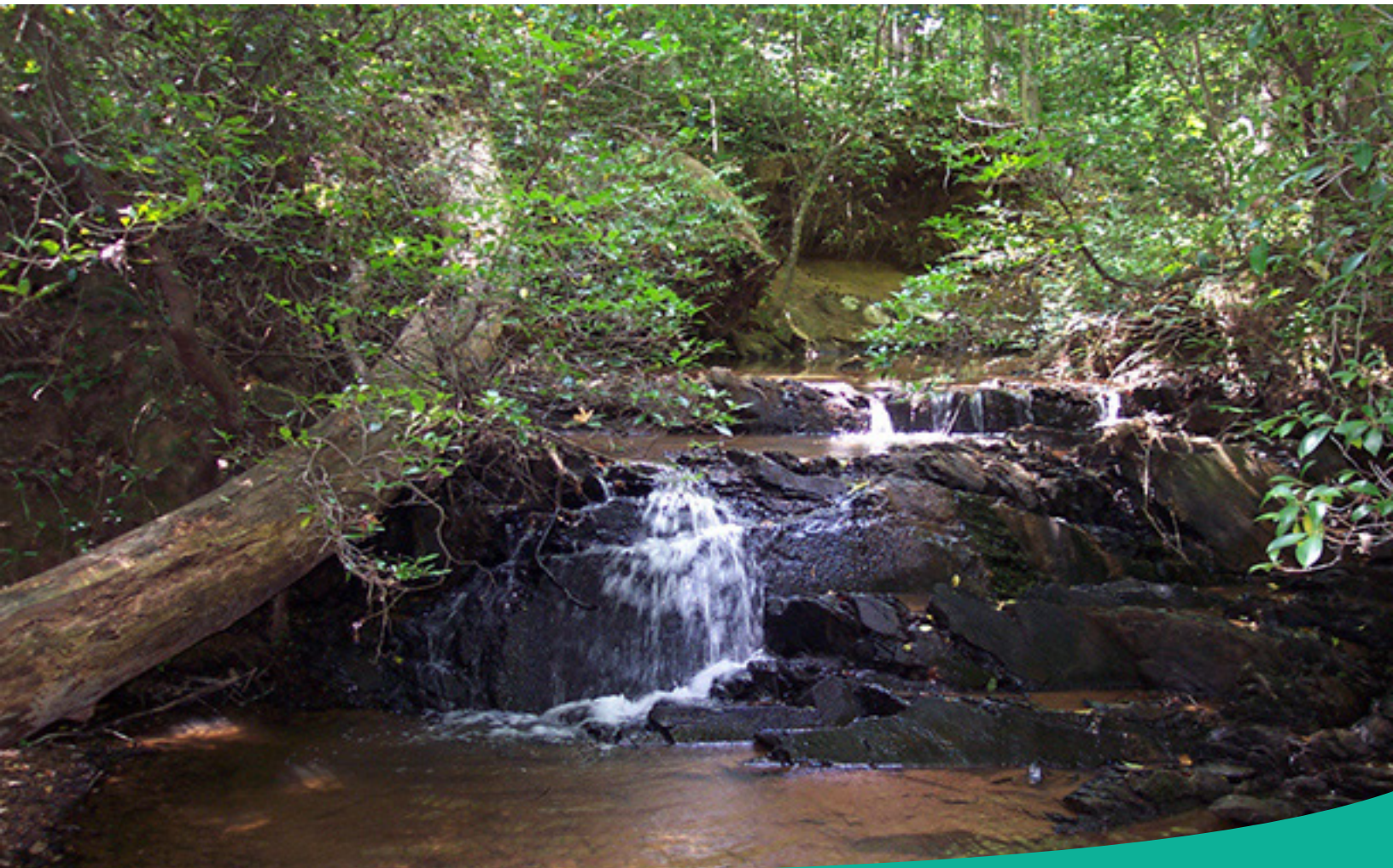


SPLIT ROCK  
STUDIOS



# Table of Contents ~

Summit Sponsors .....	2
Table of Contents .....	3
Welcome .....	4-5
About the Summit .....	6
Registration, Scholarships & Fees .....	7
Transportation .....	8
Accommodations .....	9
Schedule at a Glance .....	10
Featured Speakers .....	11
Workshops .....	12-18
Facilitated Sessions & Mini-Workshops .....	19
About the Nature-Based Preschool National Conference .....	20
Nature-Based Preschool National Conference Schedule at a Glance ..	21
Nature-Based Preschool National Conference Workshops .....	22-23
Pre- & Post-Summit Field Trips .....	24-25
Georgia Travel Guide .....	26-27
About ANCA .....	28



# Welcome ~ from Elachee Nature Science Center



*the Staff of Elachee  
Welcome You Too!*

Andrea Timpone, President & CEO  
Lavon Callahan, Director of  
Development & Communications  
Peter Gordon, Director of Education  
Melissa Reid, Education Program Manager  
Janice Jones, Operations Manager  
Sybil Hall-Beheler, Communications &  
Marketing Coordinator  
Rhonda Bailey, Nature Preschool Director  
Angela Belanger, Preschool Teacher  
Helen Watson, Preschool Teacher  
Ciara Loggins, Camp Elachee Director  
Rachelle Howie, Bookkeeper  
Karen Legg, Information Assistant  
Judy Stock, Gift Shop Manager  
Kay Adams, Gift Shop Assistant  
Darrell Dollar, Facility Manager  
Cindy Andrews, Senior Naturalist  
Roanne LaVere, Senior Naturalist  
Robert Webb, Senior Naturalist  
Connie Barrow, Naturalist  
Deb DeRoche, Naturalist  
Laurin Peacock, Naturalist &  
Animal Curator  
Leslie Perry, Naturalist  
Norma Rainwater, Naturalist  
Ruby Richards, Naturalist  
Melanie Roeming, Naturalist  
Carol Sowers, Naturalist  
Courtney Wade, Naturalist  
Callie Wheat, Naturalist  
Grier Wood, Naturalist  
Pat Mears, Animal Curator

Welcome to the Natural Connections Summit!

All of the staff, board members, and volunteers of Elachee Nature Science Center are thrilled to host you in beautiful North Georgia and to share our very special part of our unique state with you!

For more than 35 years, Elachee Nature Science Center has provided educational experiences in the natural world for school children, adults, and families. Located in the 1,400 acre Chicopee Woods Nature Preserve just 1 hour north of Atlanta, we work in diverse programs to promote environmental understanding and conservation. Besides our museum, classrooms, and outdoor teaching spaces, we have 12 miles of hiking trails and are adjacent to a golf course and 22 miles of single track mountain bike trails.

Elachee staff members have worked diligently on the programming for the Summit and all the aspects like hospitality and field trips that will make your ANCA experience the best ever. We hope that while you are with us you will make new "Natural Connections" with colleagues and Elachee staff, and take time to naturally connect with our distinctive southern culture and biodiverse woodlands.

See you here in August!

*Andrea Timpone*  
President and CEO, Elachee Nature Science Center



# Welcome ~ from ANCA

On behalf of the ANCA board of directors and staff, I invite you to join us at ANCA Summit XXI, *Natural Connections*, to be held in Gainesville, GA at the Elachee Nature Science Center.

Ann Rilling, ANCA Marketing & Communications Director, and I had the pleasure of visiting the site this winter and were thoroughly impressed with the facilities, the programs, and of course the amazing and hospitable staff! The center is located in the beautiful Chicopee Woods Nature Preserve providing the perfect setting for learning, sharing, and reflection.

Why attend the Summit? Whether you come from a small or large staff, a modest or sizable budget, lots of acreage or a single building, there is no substitute for the inspiration you can get from and give to folks who face the same challenges and triumphs that you do. The ANCA Summit can change your perspective and help bring a new "can-do" attitude to managing your organization. You will share stories, learn new things, laugh, have fun, be challenged, and become part of a network of nature center leaders gathered in the best possible atmosphere.

We are excited that once again we will be hosting the Nature-Based Preschool National Conference (NBP) in conjunction with the Summit. This is an excellent professional development opportunity for NBP teachers and administrators. In addition, it provides ANCA members the opportunity to interact with and learn from NBP professionals. Both Summit and NBP Conference participants are invited to attend the programming offered by the other group.

Thanks to a generous gift from the North American Association for Environmental Education's Natural Start Alliance, the cost to attend will be subsidized for NBP individuals who qualify according to their guidelines outlined on page 20.

For more information about ANCA, visit our website at [www.natctr.org](http://www.natctr.org), and if you have any questions, please call me at 435-787-8209.

I look forward to seeing you in Georgia!

*Jen Levy*  
Executive Director, ANCA



## *ANCA Board of Directors*

Jim Berry - President  
Roger Tory Peterson Institute (Ret.)  
Francis Velazquez - V.P. of Prof. Services  
York County Parks, Nixon Park  
Pat Welch - V.P. of Development  
Pine Jog Environ. Ed. Center (Ret.)  
Keanna Leonard - Secretary  
Rowe Sanctuary and Audubon Center  
Tim Sandsmark- Treasurer  
Lookout Mountain Nature Center  
Kay Carlson  
The Nature Center at Shaker Lakes  
John DeFillipo  
John Bunker Sands Wetland Center  
Victor Elderton  
Norgate Community Elementary  
Amber Parker  
Chincoteague Bay Field Station  
Ken Voorhis  
Yellowstone Association  
Patty Weisse  
SALT of Central New York, LLC  
Brian Winslow  
Delaware Nature Society

## *ANCA Staff*

Jen Levy, Executive Director  
Ann Rilling, Director of Marketing  
& Communications  
Cameron Lawrence, Membership  
Services Coordinator

# About ~ the ANCA Summit

## **What Is the ANCA Summit?**

Unlike more conventional conferences, ANCA offers a facilitated discussion format during the Summit, recognizing the tremendous value gained by sharing peer knowledge and the experiences of others in the field. You will be encouraged to participate by sharing your experiences, asking questions, and listening to your peers. As a result, you will leave with new ideas and lessons, and a strong network of colleagues.

## **The Summit Includes:**

*Full- and Half-day Workshops* are scheduled for Thursday and you choose which ones to attend when you register. These sessions offer a rich learning experience with workshop leaders who are experienced and knowledgeable in their topics.

*Facilitated Sessions*, scheduled on Friday and Saturday, are a unique feature of the ANCA Summit. Instead of a single voice presenting information, everyone present will enrich the discussion by contributing his or her ideas and experiences. The result is a synergistic dialogue that brings out an abundance of perspectives, possibilities, and renewed energy. During Facilitated Sessions, participants have the opportunity to explore various topics in depth.

*Mini-Workshops* allow participants the opportunity to learn about new programs and ideas. These 90-minute sessions allow for presentation time and dialogue among the group.

*Open Space Sessions* on Saturday afternoon provide an opportunity for participants to create their own meeting, continue a session that needs more time, or find a group to address an issue that was not presented elsewhere during the Summit. In the Open Space Meeting, Summit participants will gather and collectively design the session topics that will be offered during the afternoon. We ask you to bring to the meeting those topics that you feel will be relevant and meaningful to you and the group.

*The Nature-Based Preschool National Conference* brings professionals together from around the country to advance the movement to use nature to improve early childhood education, and to create a community for this new and growing profession. Both Summit and NBP National Conference participants are invited to attend the programming offered by the other group.

## *And More...!*

The ANCA Summit is hosted at an ANCA member center and gives participants the opportunity to: meet and talk with the staff; tour classrooms, exhibits, and trails; go behind-the-scenes to look at offices, storage, and maintenance; and simply relax and enjoy the flavors of the region through food, drink, and unique entertainment!

# Registration ~ Scholarships & Fees

## Registration

Before registering, please review the detailed information in this brochure. Then go to the link below which will take you to the secure registration site. As you fill out the user-friendly form you will select workshop choices, field trips, and design the Summit package that's right for you. You will have the option to print your completed registration and mail a check or pay online with a credit card. If you have questions or concerns please contact the ANCA Office at 435-787-8209. If you have questions about the Elachee Nature Science Center or the surrounding area, please call 770-535-1976.

## Scholarships

ANCA provides scholarship funding based on financial need. Priority is given to applicants with small budgets and to first-time attendees.

Summit Scholarship Application – Deadline, June 1

Awards Announced by June 15

Download the application from the ANCA website, <http://www.natctr.org/index.php?id=7>

Please call Jen Levy at 435-787-8209 with any questions.

## Fees

All lunches and dinners at Elachee are included with Summit registration. If you are bringing guests to the Summit, you can purchase meals for them using the *Guest Registration Form*. Meals will include Wednesday dinner, Thursday lunch and dinner, Friday lunch and dinner, and Saturday lunch and dinner. The Summit registration fee does not include pre- or post-Summit field trips.

	<b>ANCA Member*</b> (per person)	<b>Non-Member</b> (per person)
<b>ANCA Summit</b>		
Full Package (Wed.-Sat.)	\$475	\$525
2-Day Rate (Thurs. & Fri. or Fri. & Sat.)	\$400	\$450
1-Day Rate (Thurs. or Fri. or Sat.)	\$300	\$350

\*ANCA membership is required and is available at a discounted rate of \$50 for a 1 year membership.

## Nature-Based Preschool National Conference

Full Package (Wed.-Sat.)	\$275	\$275
--------------------------	-------	-------

(This is a subsidized rate. To see if you qualify please contact Rhonda at 770-535-1976 ext. 222 / [rhonda@elachee.org](mailto:rhonda@elachee.org). These reduced rates are limited so register early.)

Schedule & workshop information on pages 20-23

## Please note:

Early Bird prices are listed above. After July 9 fees will increase by \$75.

# Transportation ~

## Air Travel:

Summit attendees should fly into Atlanta's Hartsfield-Jackson International Airport (ATL airport code) where Delta Airlines has its hub. Depending on traffic, Gainesville (and Elachee) is 1-1½ hours from the airport.

## Shuttles between ATL and Gainesville:

There are two choices for shuttle service:

- Elachee will be running several shuttles on Wednesday and Sunday for \$40 each way. Participants should note this need on their registration form.
- Superior Shuttle (770-457-4794, [www.atlsuperiorshuttle.com](http://www.atlsuperiorshuttle.com)) is a commercial service with 5 runs daily (to the Holiday Inn in Gainesville). The cost is \$55 one way or \$105 round trip. Summit attendees will need to book directly with Superior (please indicate you will be using this shuttle option on your Wufoo registration form so that pickup from the Holiday Inn and delivery to the 2 host hotels can be scheduled).
- Shuttles between Elachee and Summit host hotels (Fairfield Inn or Hilton Garden Inn) will be offered during the Summit. The host hotels are located 4 miles from Elachee.

## Address:

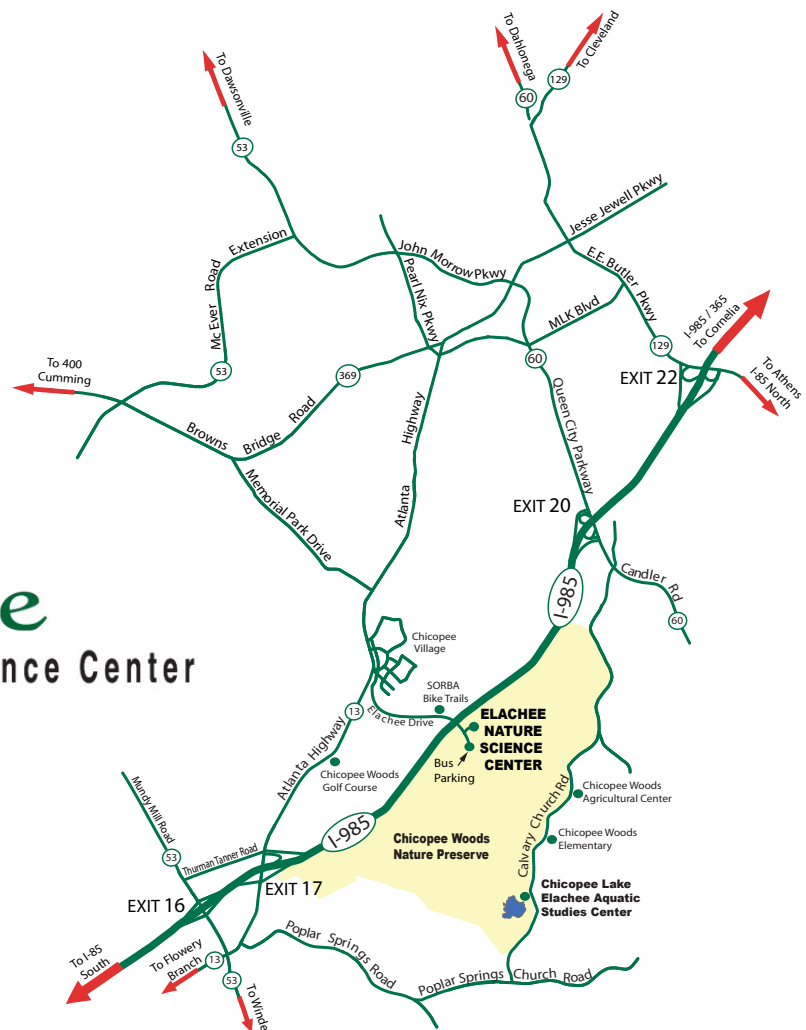
2125 Elachee Drive  
Gainesville, GA 30504

## Phone:

770-535-1976

## Website:

[www.elachee.org](http://www.elachee.org)





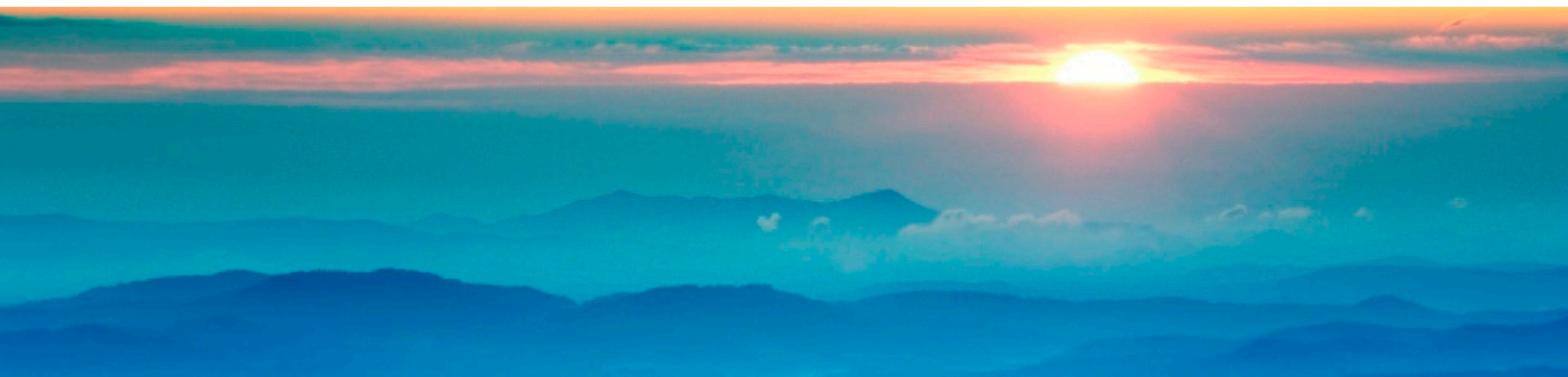
# Accommodations ~

## Hotels on the Shuttle Route with Special ANCA Summit Rates

Reserve by Thursday, July 30th to receive the ANCA discounted rate. After this date, rooms are dependent on availability and rates will increase substantially.

- **Fairfield Inn and Suites** by Marriot Gainesville (10-15 minutes to Elachee via shuttle)  
Address: 1755 Browns Bridge Road, Gainesville, GA, 30501  
Phone: 678-971-4670 or Book Online (If this link does not work please call the hotel directly.)  
\$92 per night + 13% tax  
2 double beds with sleeper sofa or 1 king bed with sleeper sofa  
Includes breakfast, indoor pool, 24 hour fitness and business centers, complimentary hi-speed internet, microwave, and mini fridge.

- **Hilton Garden Inn Gainesville** (10-15 minutes to Elachee via shuttle)  
Address: 1735 Browns Bridge Road, Gainesville, GA 30501  
Phone: 770-532-3396 (to reserve your room ask for ANCC rate (not ANCA) or Association of Nature Centers) or Book Online (If this link does not work please call the hotel directly.)  
\$95 per night + 13% tax  
2 queen beds  
Includes breakfast, bar and dinner service, snack bar, business center, and mini fridge, free wi-fi, deli, indoor/outdoor pool.



## Other options Not on Shuttle Routes and No Special ANCA Rates

- Best Western Plus Lake Lanier – Oakwood, GA (closest to Elachee)  
Phone: 770-535-8080
- Holiday Inn Gainesville – Lanier Center – Gainesville, GA  
Phone: 877-410-6667
- Guest House Inn Suites – Gainesville, GA  
Phone: 800-214-8378
- Camping – Hall County Parks, River Forks Park Campground (closest to Elachee)  
Phone: 770-531-3952
- Camping/Cabins – Don Carter State Park – Georgia's newest state park on Lake Lanier  
Phone: 800-864-7275
- Camping – Lake Lanier Islands Campground  
Phone: 770-945-8787

# Schedule ~ at a Glance

## Tuesday, August 18

5-7pm Registration Open

## Wednesday, August 19

8am-6pm Registration Open

Pre-Summit Field Trips – depart from hotels

- Mountain Biking in North Georgia – 8:30am-4pm
- Lake Lanier Houseboat Ride – Noon-4pm
- Paddle Boarding on Lake Lanier – Noon-4pm

5-6pm Networking Social

6-8pm BBQ Dinner, Summit Welcome

## Thursday, August 20

8am-6pm Registration Open

Full-Day Workshops – 9am-4:15pm

- Interpreting Climate Change with NNOCCI (National Network for Ocean & Climate Change Interpretation)
- Nature-Based Preschools
- ANCA On The Road – 8am-4:15pm  
~ Atlanta - Chattahoochee Nature Center & Dunwoody Nature Center  
or

~ Athens, The Classic City - Sandy Creek Nature Center & The Georgia Botanical Garden

Morning Workshops – 9am-Noon

- Want a Good Plan? Get Strategic!
- Going Beyond LEED
- Gardens That Teach
- The B.E.E.T.L.E.S. Project (Part 1) Shifting Programming to Involve More Direct Engagement of Participants with Nature

Noon-1pm Lunch

Afternoon Workshops – 1:15-4:15pm

- The B.E.E.T.L.E.S. Project (Part 2) Shifting Programming towards Learner-Centered Instruction
- Greening Your Nature Center
- Navigating the Generations
- Major Gift Fundraising Within the Context of Resource Development

## Thursday cont.

5-6pm

Networking Social

6-7pm

Dinner

7-7:45pm

Leadership Awards

8pm

Drum Circle

## Friday, August 21

8:30-9:00am

Featured Speaker

Jon Anderson – Interpreting Climate Change

9-10:30am

Facilitated Sessions I

10:30am-Noon

Facilitated Sessions II

Noon-1:30pm

Lunch & Featured

Speakers – OMG

1:30-3pm

Facilitated Sessions III

3pm

Ice Cream Social

3:30-5pm

Innovation Gathering

5-6pm

Networking Social

6-9pm

South of the Border

Dinner & Live Auction

## Saturday, August 22

9-10:30am

Facilitated Sessions IV

10:30am-Noon

Facilitated Sessions V

Noon-1:00 pm

Lunch

1-5pm

Open Space Sessions

5-6pm

Networking Social

6-7pm

“Kicked Up” Southern

Banquet & Fun

7pm

Summit Wrap Up, Band,

& Dance

## Sunday, August 23

Post-Summit Field Trips

- Birding Cruise on the Chattahoochee River – 7:30am-Noon
- Explore Dahlonga, GA – Canoeing/ Kayaking and Gold Mining – 8am-6pm



# Featured Speakers ~

## Shaping the Climate Change Discourse ~ **John C. Anderson**

An introduction to ways social science can help to shape interpretation about climate change issues to be interesting, engaging, and empowering. The theory of strategic framing offers specific recommendations that nature center interpreters can practice with to help our field evolve and help shape the broader public discourse to be more productive.

John C. Anderson is Director of Education at New England Aquarium, where he leads efforts to develop programs that foster an ethic of ocean stewardship for audiences from school students to families to teachers. He has collaborated on several climate change education projects and is currently directing a capacity-building project called the National Network for Ocean and Climate Change Interpretation. Anderson earned his MA in biology from Boston University and his BA in biology from Oberlin College and is a Senior Fellow of the Environmental Leadership Program.



## One More Generation Foundation ~ **Carter and Olivia Ries**

One More Generation (OMG) was founded in 2009, by siblings Carter and Olivia Ries. Carter (now 13) and his sister Olivia (now 12) are both extremely passionate about animals and conservation. Following the adoption of cheetahs in South Africa, Carter and Olivia began to question why humans would need to adopt wild animals like the cheetah. They soon learned of the pressing issues surrounding endangered species, and knew they had to act.

Carter and Olivia started their own nonprofit in an effort to help educate children and adults about the plight of endangered species. They started their organization with the intention to preserve these species for at least One More Generation... and beyond. Shortly after starting their organization, Carter and Olivia took action to assist marine wildlife affected by the BP Gulf oil spill. After spending four months collecting animal rescue supplies, the two spent five days delivering their supplies and rehabilitating marine wildlife. The two learned first hand that many animals are at risk of extinction due to environmental threats, specifically plastic pollution. Carter and Olivia proceeded to create a Plastic and Recycling curriculum for elementary school students, launching their first environmental conservation initiative. They have since launched additional divisions within OMG designed to empower youth around the world to stand up and help create solutions for the pressing issues of today.



# Workshops ~ Full-Day

Thursday, August 20th, 8am - 5pm

## **ANCA on the Road**

This popular, dynamic, and unique workshop returns in 2015 with two options available to ANCA Summit participants. Both trips will include in-depth, behind the scenes visits to two important environmental education providers in each locale that will be conducted by members of the respective organization's leadership teams. Participants will see how each organization handles:

- ~ Governance
- ~ Fundraising
- ~ Programming
- ~ Key Partnerships and Collaborations
- ~ Volunteers
- ~ Exhibits, Trails & Natural Resource Management
- ~ Other Organizational Aspects

## **ANCA on the Road #1 – Atlanta**

This trip will head south to the north Atlanta-metro suburbs of Dunwoody and Roswell. Our first stop will be at Dunwoody Nature Center, a small but growing government-funded center located in an affluent satellite community of Atlanta. Join Executive Director Allen Mothner and tour the beautiful park setting while he discusses the many recent changes DNC has experienced in its organizational structure, physical plant, and programming capability.

We will then travel up the road to Chattahoochee Nature Center, Georgia's oldest and largest non-profit nature center. CNC is located on the banks of the Chattahoochee River and has recently transformed its campus as a result of a successful capital campaign. Meet with Executive Director Chris Nelson to discuss the organization's accomplishments and future challenges or visit with other senior staff members to discuss programming, exhibits, animal rehabilitation, summer camp, or community gardens.

## **ANCA on the Road #2 – The Classic City-Athens, GA**

We'll head east to Athens, home to the University of Georgia, an influential music scene and two of Georgia's premier environmental education and conservation organizations. Our first stop will be at the University of Georgia's State Botanical Garden, a renowned research and educational organization located on the banks of the Oconee River. Tour the gardens and meet with Education Director Anne Schenk and members of her staff who will discuss the organization's signature work in education, research, and conservation.

Then we'll head across town to Sandy Creek Nature Center, a longstanding organization that is funded by both Clarke County Government and through the work of an active Friends Group. Director Randy Smith and other members of his staff and Board will greet the group, discuss the nature center's relationship with UGA and other important partners, review its programming, and tour you through its updated facilities and impressive new exhibits.

## **Nature-Based Preschool Workshop – Held at Elachee Nature Preschool - 9am-5pm**

This full-day workshop will offer 3 tracks: Teacher, Administrative, Preschool 101  
See pages 22-23 for details.

# Workshops ~ Full-Day

Thursday, August 20th, 9am - 4:15pm

## **Interpreting Climate Change**

*Maximum number of participants: 30*

This workshop will explore techniques of strategic framing to interpret climate change. This is a research-based approach to communications that helps to engage audiences in thinking productively about how they can participate in creating or supporting solutions to climate change. Participants will learn to apply framing tools, including universal values, metaphors, explanatory chains, and solutions. Learning to use these approaches carefully can help tell a core story about climate change in a way that increases the likelihood that audiences will think positively and constructively about ways to address the issues.

Participants will leave with specific research-based ideas to bring to conversations and presentations about climate change issues. They will have at least one specific vision for applying these ideas, so the lessons won't be lost to the hustle and bustle of returning to work after the conference. And, participants will be energized by hopefulness built by sharing in learning and practice with other colleagues committed to stimulating productive conversations about how all of us can participate in shaping positive changes in the world.

### **Presented by:**

*John C. Anderson* – Director of Education, National Network for Ocean and Climate Change Interpretation (NNOCCI)

John serves as Director of Education at the New England Aquarium, where he leads efforts to develop, assess, refine, and operate educational programs for many audiences including school students, families, teenagers, and teachers. In recent years, he has been leading collaborative projects with other aquariums to build capacity for effective interpretation and exhibit development related to climate change, oceans, mercury pollution, solar energy, and energy choices.

*Juliann Chavez* – is the Lab Manager at Discovery Place located in Charlotte, NC. As the Lab Manager Juliann oversees three interactive lab spaces including the Explore More Life lab which has a focus of biodiversity and conservation. All three lab spaces have a variety of ways in which we interact with the public to spread awareness and hopefully create stewards for our planet, including, animal interactions, events, special guest speakers, classes, and other programs. Currently Juliann is creating new programming to incorporate more climate messaging and training not only museum education staff but front line staff and upper management from the knowledge gained through the "National Network for Ocean and Climate Change Interpretation." Juliann has a BA in zoology from The Ohio State University and is currently working on a MA in biology from Miami University of Ohio's project dragonfly program.

# Workshops ~ Full-Day or Half-Day

Thursday, August 20th, 9am - 4:15pm

## **Using Professional Learning and Next Generation Science Standards to Improve the Quality of Programming at Environmental Learning Centers**

*This is a full-day workshop on the topic, the second half of the day will build on the first half, but participants can choose to attend either the morning or afternoon section as half-day workshops.*

### **The B.E.E.T.L.E.S. Project**

Better Environmental Education, Teaching, Learning & Expertise Sharing

#### **Part 1: Shifting Programming to Involve More Direct Engagement of Participants with Nature**

9am - Noon

The best thing outdoor science instructors can do is empower students with tools to directly engage with nature, so they can build ongoing relationships with the natural world that continue after they leave our programs. By providing students with inquiry routines, and encouraging them to engage in science practices like making observations, asking questions, and making evidence-based explanations to attempt to answer questions, we can give them lifelong curiosity-stoking tools and lenses that can ensure that they will never be bored in nature. In this session, we'll model portions of professional learning sessions that demonstrate these sorts of routines, and that help ignite staff interest and ongoing discussion on this important topic. We will also discuss Next Generation Science Standards (NGSS) connections to practices of science that help us understand and engage with nature.

#### **Part 2 : Shifting Programming Towards Learner-Centered Instruction**

1:15 - 4:15pm

Research is clear that peer-to-peer and student-to-instructor discussion is important to learning. Yet many educators struggle with asking questions that incite curiosity and facilitate meaning-making. During this session, we'll feature portions of professional learning sessions that provide instructors with tools to think about and improve their own questioning and discussion-leading strategies, and how to appropriately use questions that incite student curiosity and wonder, a foundation to feeling connected to nature. We will also feature staff professional learning activities that explore typical roles instructors can take during instruction ("sage on the stage," "guide on the side," or "entertainer") and how taking on these roles can either draw out student questions or, in the extreme, shut them down. We will also discuss how learner-centered instruction is intricately tied to the goals of NGSS.

#### **Presented by:**

*The B.E.E.T.L.E.S. Project* (Better Environmental Education, Teaching, Learning & Expertise Sharing) creates and shares free professional learning sessions and student activities designed specifically for the outdoor science education context. The group also translates current research about teaching and learning into practical professional learning and teaching materials for outdoor science educators. It also collects and designs approaches and activities that are less instructor/telling/games/facts-centered, and are more student/discussion/nature/exploration/big idea-centered.



# Workshops ~ Half-Day

Thursday, August 20th, 9am - Noon

## **Want a Good Plan? Get Strategic!**

Whether our first, last, or one in a string of many, very often, strategic planning processes bring heartburn and result in products that hardly seem connected to the work we inevitably do. We can positively affect the usefulness of our planning by understanding all that a plan can (and can't) offer, exactly what results we want and need from a planning process, and then working to craft that process to meet our organization's current resources and needs. In this interactive session, participants will learn the basic components of all planning efforts, hear about a colleague organization's recent planning experience, and leave with action steps that get them closer to meeting their own planning needs.

### **Presented by:**

*Sayge Medlin* – J.W. Fanning Institute for Leadership Development,  
The University of Georgia

For the last 15 years, Sayge has worked with nonprofits, community groups, state agencies, leaders, and initiatives across Georgia. Her areas of focus include community assessment, strategic planning, group facilitation and consensus building, project management, and community-based collaboration. As a result, she is often called upon to assist groups as they engage in short-term planning or Board development efforts. Over the last 2 years, she has worked with the Friends of the State Botanical Garden of Georgia, Community Connection of Northeast Georgia, Lukas' Fund, Jeannette Rankin Foundation, University of Georgia's Office of Development, The Cottage: Sexual Assault Center and Child Advocacy Center, and the Northeast Georgia Regional Development Commission.

## **Gardens that Teach**

The Fockele Garden Company is renowned throughout the southeast for creating beautiful sustainable gardens that combine aesthetics and purposeful design. This is especially true for those that they have created with children and their needs in mind. Join Julie Evans and Mark Fockele for this workshop and garden tour as they discuss the educational, physical and therapeutic factors they considered when constructing a variety of unique and award-winning children's gardens throughout the Gainesville community.

### **Presented by:**

*Julie Evans* joined The Fockele Garden Company in 2000 and became a partner in 2005. She has helped guide the company's development into an award winning design-build-maintain firm that offers a wide variety of services consistent with a commitment to good stewardship. She has a long-term fascination with plant communities and employs ecological principles and proper plant selection to develop planting designs that can solve problems on challenging sites, such as storm water runoff, erosion, degraded soils, and extreme growing conditions.

*Mark Fockele* founded The Fockele Garden Company in 1990, and has guided its expansion over the years into 5 states and a wide variety of landscape disciplines, with an emphasis on a natural style and a sustainable ethic. He specializes in designing and developing unique and beautiful water features, rainwater harvesting systems, drought tolerant plantings, and related water technologies that have allowed the company to create gardens with little or no reliance on potable water supplies.

# Workshops ~ Half-Day

Thursday, August 20th, 9am - Noon

## Going Beyond Leed

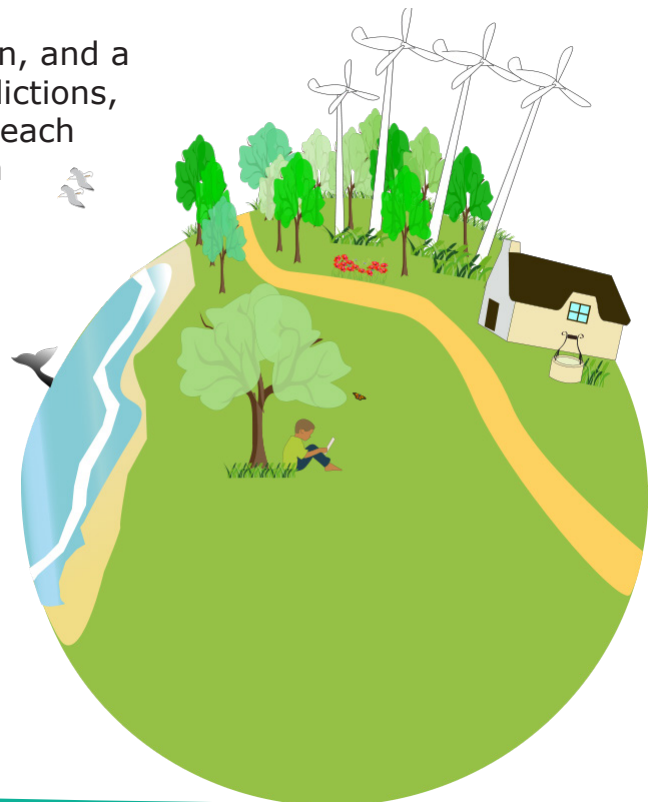
LEED certification for renovation and design of buildings has been widely adopted within the nature center community. However, newer, more rigorous and wide-ranging standards of sustainable design are emerging. The Living Building Challenge is one such standard that goes beyond LEED in many important areas.

This is an interactive half-day workshop that describes the Living Building Challenge and explains how it differs from LEED. In particular, we will examine key Living Building Challenge issues such as the more stringent Materials 'Red List,' achieving Net Zero Water and Net Zero Energy, as well as unique new topics including social responsibility, JUST Organizations, Urban Agriculture (where appropriate), Habitat Exchange, and others. In addition, the workshop will outline the three types of certification available: Living Building Certification, Petal Recognition, or Net Zero Energy Building Certification.

## Presented by:

*Wayne Reckard* – Since joining TKWA in 2001 Wayne has worked to advance the integration of interpretation and architecture through professional organizations including the Association of Nature Center Administrators and National Association for Interpretation. Wayne is a member of the International Living Future Institute, an Advisory Board member for Bjorklunden, a residential environmental and cultural retreat center located along the shore of Lake Michigan in Door County, Wisconsin, a supporting member of Brandenburg Prairie Foundation and an accomplished photographer whose photos have appeared in a variety of renowned publications including *National Geographic* and the *New York Times*.

*Erik Hancock* is an architect, classically trained musician, and a database developer who is irresistibly drawn to contradictions, unsolvable, and impossible problems. He believes that each stone taken from the earth to make a building exacts a cost that must be carefully weighed against the reason and the result. His designs are driven by the idea that architecture is a vessel to honor human experience, to foster community, and to make responsible use of resources. His recent projects include the U.S. Fish & Wildlife Great River Road Interpretive Center, the Norskedalen Heritage Site Master Plan, and the YMCA Camp Minikani Master Plan.





# Workshops ~ Half-Day

Thursday, August 20th, 1:15 - 4:15pm

## **Major Gift Fundraising Within the Context of Resource Development**

Fundraising plays an important but not exclusive role in an organization's resource development. This is particularly true in major gift fundraising which has its origins within a non-profit's strategic plan and its organic connections to the organization's communication message.

Cover a lot of ground in 4 hours and learn a variety of ways to improve your fundraising efforts from one of the country's foremost fundraising consultants. During the first half of the workshop, learn the foundational elements of a successful major gift fundraising effort – all the sophisticated protocols that need to be accomplished before the first dollar is raised. Then, discover the best practices of major gift fundraising that will help you meet your revenue goals.

### **Presented by:**

*Rob Townes* is Executive Vice President of Sinclair, Townes & Company. He has more than 30 years of experience providing general and capital campaign counsel for numerous philanthropic organizations across the United States.

## **Navigating the Generations**

Never before has there been a workforce and workplace so diverse it requires a GPS – Generational Positioning System to navigate the challenging journey. During this session we will travel to the four major generational groups, stopping along the way to tour the unique demographic challenges. Veterans, Boomers, Xers, and Nexters each have different ways of viewing the work world. Issues such as workplace equity, quality, service, managing, and being managed will be discussed. Participants will complete the journey in possession of a variety of insights, strategies, and solutions for understanding differences, resolving conflicts, and effectively managing their way through the generations.

### **Presented by:**

*Debra Weber* has worked as a human resources officer in the healthcare industry for over 30 years. She joined Northeast Georgia Health System as Chief Human Resource Officer in July of 2014. Her job responsibilities include workforce planning and recruitment, employee benefits, compensation, human resource information systems, employee wellness, employee education, and occupational health and safety.

# Workshops ~ Half-Day

Thursday, August 20th, 1:15 - 4:15pm

## Greening Your Nature Center

Presented in two parts, this interactive workshop will provide participants with an understanding of holistic sustainability and basic resource efficiency concepts that will prepare to make informed decisions for improving a building's performance and ultimately reduce operating costs. The first session will focus on basic sustainability concepts to explain the benefits of green buildings to our communities provide tips on saving resources at home and in the office, provide participants with a Top 10 list of simple no-to-low cost projects to implement for a greener building and will tackle common resource efficiency misconceptions myths and misconceptions head on.

The second session will teach you ways to best manage and complete the resource efficiency improvement projects you and your organization have planned to take on. Topics will include selecting and managing a contractor, complying with building codes and utility rebates, effective planning, coordinating with consultants, dealing with the unexpected, and more.

## Presented by:

*Shane Totten* – As director of Commercial Green Building Services for Southface in Atlanta, Totten and his team help local and regional businesses achieve their sustainability goals. The team's services include LEED administration and consulting, the Atlanta Better Buildings Challenge, EarthCraft Light Commercial, EarthCraft Sustainable Preservation, and training events on commercial topics. Most recently, Shane served as associate chair of the School of Building Arts at Savannah College of Art and Design's (SCAD) campus in Atlanta.



# a sampling ~ of Facilitated Sessions & Mini-Workshops

**Facilitated Sessions** are a unique feature of the ANCA Summit. Instead of a single voice presenting information, everyone present will enrich the discussion by contributing his or her ideas and experiences. The result is a synergistic dialogue that brings out an abundance of perspectives, possibilities, and renewed energy.

**Mini-Workshops** allow participants the opportunity to learn about new programs and ideas. These 90-minute sessions allow for presentation time and dialogue among the group.

- **Communicating Your Message to the “I Don’t Get it” Crowd:** Constructing and sharing short powerful messages that get across what a nature center does and its value to people in one minute or less.
- **The Anatomy of Good Animal Care:** If like many centers, your exhibit animals play a featured role in your programming, what are the best ways to care for and humanely use your animals?
- **Cyber Security for Nature Centers:** Are you doing everything you can to protect your records and data and that of your members and donors in this age of cyber attack?
- **2 for 1 Transitions:** Are the days of finding single replacements for retiring, multi-tasking senior staff a thing of the past? Learn to handle the “T-word” in ways that don’t break your budget.
- **Creative Partnerships with Local Governments:** “Outsourcing” is not such a loaded word when your nature center is on the receiving end.
- **What are they Worth? The True Value of Nature Preserves & Parklands:** By calculating the environmental, economic, and health benefits you can prove – and interpret – the value of your facilities. If you want support, prove you’re worth it!
- **Diversifying Your Nature Center’s Workforce:** Strengthen your ties to your community by learning and sharing ways to attract and engage a more diverse staff and board.
- **Deepening your Board’s Involvement:** Since a good and informed board member is your nature center’s best public relations vehicle, discover and discuss new and different ways to broaden your board’s understanding and appreciation of the work you do.
- **Teaching & Sharing Nature: Grow the Passion!:** Join us for a discussion & come away with ideas for the questions: What inspires individuals to teach & share nature? Could teachers use personal interests related to the natural world to enhance their teaching and learn with students? How could teaching with nature ignite professional development and vice versa?
- **Branding the Taylor Swift Way:** Busy professionals face tough decisions about their precious time every day. Social media is not a post-modern curse.
- More on these 25+ learning opportunities will be available at the Summit.

# About ~ the Nature-Based Preschool National Conference

The third Nature-Based Preschool National Conference (NBP) will be held at the Elachee Nature Preschool in Gainesville, GA as part of the Association of Nature Center Administrators (ANCA) annual Summit. Participants have opportunities to interact with ANCA members and share their ideas regarding nature-based preschools.

*ANCA Summit participants may attend the Nature-Based Preschool Workshop sessions on Thursday by choosing this workshop option on the registration form.*

## **Agenda:**

- Tour Elachee's Nature Preschool and explore their inviting and inspiring Nature Playscape
- Join a panel of experts in the field as we discuss issues facing this growing profession
- Learn from peers through sessions geared toward nature preschool staff and those interested in starting their own preschool
- The remainder of the time will be integrated with the overall ANCA Summit. Descriptions for keynote speakers, social events, and schedules can be found within the registration brochure

## **Nature-Based Preschool Pricing Guidelines:**

Thanks to a generous gift from the North American Association for Environmental Education's Natural Start Alliance we are able to offset the cost of the NBP Conference/ANCA Summit for the following individuals:

- Educators and administrators whose primary role is working with nature-based preschools or
- Other early childhood (birth-5 years) environmental education projects

This includes:

- Preschool teachers or other early childhood educators
- Naturalists/teachers whose job responsibilities include more than 75% work with nature-based, early childhood programming
- Early childhood/nature preschool directors

This does NOT include:

- Executive directors and other senior administrators of nature centers that have a nature-based preschool
- Naturalists/teachers whose job responsibilities include less than 75% of their time with early-childhood programming

## **Questions should be directed to:**

Rhonda Bailey, Elachee Nature Preschool Director  
770-535-1976 ext. 222  
rhonda@elachee.org



# NBP Schedule ~ at a Glance

Below is the schedule for programming specifically for the Nature-Based Preschool National Conference, the remainder of the time will be integrated with the overall ANCA Summit. Descriptions for keynote speakers, social events, and schedules can be found within the Registration Brochure.

*Session Track Key: T-Teacher, Admin-Administrative, 101-Fundamentals of a NB Preschool*

## Wednesday, August 19

8am-6pm Registration Open

## Thursday, August 20

9-10:30 Welcome & Keynote  
Speaker – David Sobel

10:30-10:45 Break

10:45-Noon Workshops

- Nature Inspired Art Project for Children(T)
- Flexible Thinking in the Forest Classroom (T; Admin)
- Awareness of Risk (T; Admin; 101)

Noon-1pm Lunch & Tours of Preschool

1-2:15pm Workshops

- Lettuce Learn to Grow (T; Admin)
- Creating & Teaching in Natural Outdoor Classrooms (T; Admin; 101)
- How to Write a Business Plan (101)

2:15-2:45pm Break & Tours of Preschool

2:45-4pm Facilitated Sessions

- How do Academics Fit in Nature Play (T; Admin)
- A Place for Permaculture (T; Admin)
- Get your NP 101 Questions Answered (101)

4-5pm Wrap-up & Tours of Nature Preschool

## Friday, August 21

8:45-10am Full-Group Discussion/  
Round Table

10-10:15am Break

10:15-Noon Facilitated Sessions

- Filling Your Indoor and Outdoor Environments (T)
- Power of Personifying Nature (T; Admin)
- Teaching & Sharing Nature: Grow the Passion (T; Admin; 101)

Noon-1:30pm Lunch & Featured Speakers – OMG

1:30-2:45 Workshops

- Understanding Children's Learning Through Opportunities & Techniques (T; Admin; 101)
- Branding the Taylor Swift Way (Admin; 101)
- It's Easier Than You Think: Integrating Nature (T; Admin; 101)

3-3:30pm Ice Cream Social

3:30-5pm Sustaining Us Between Now and Next August: Updates on Natural Start Presented by Christy Merrick; Current News and Trends with Rachel Larimore; Regional Efforts with Megan Gessler.

## Saturday, August 22

Field Trip – Tour of local Nature-Based Preschool programs (*an additional \$40 fee which includes transportation & lunch*)



# Workshop Sessions ~ Nature-Based Preschool

The Nature-Based Preschool Workshop consists of several concurrent sessions in the morning and afternoon. Participants will be able to decide which sessions they wish to attend while on-site. This workshop will offer participants three tracks with programming for preschool teachers (T), administrators (Admin), and those who are just getting started (101).

*Thursday, August 20th ~ Morning*

## **Welcome and Keynote Speaker – David Sobel**

David is an education writer who has helped in developing the philosophy of place-based education. He has written extensively on the topic in books and numerous articles. He is currently a Core Faculty member and Director of Certificate Programs at Antioch University New England.

**Nature Inspired Art Projects for Children (with Andrea Leavitt Andersen, Boyd Hill Nature Preserve):** Gather ideas for children’s art projects that can be created using a range of natural materials. Participants will view examples of artwork, receive a small booklet of project ideas with directions, and participate in an onsite art project. (T)

**Flexible Thinking in the Forest Classroom: Utilizing the Power of the Outdoor Environment to Develop Self-Regulation (with Kit Harrington & Sarah Heller, University of Washington Fiddleheads Forest School):** Discover the how, the why, and the extraordinary benefits of teaching self-regulation in the nature-based classroom. Learn new ways to involve students and families with a variety of developmental needs and tailor a social thinking curriculum to emergent experiences in the natural world with compelling and dynamic materials, activities, and assessments. (T, Admin)



**Awareness of Risk: How to Use Nature-Based Teaching Practices to Inspire, Excite, and Engage Young Children (with Molly Gerrish , PhD, University of Wisconsin-River Falls):** This session is designed to arouse interest, inspire creativity, and encourage enthusiasm. Affordable resources will be demonstrated as well as a spiral curriculum and goal ladder approach to planning appropriate experiences. There will be a focus on integrated development and the role that healthy risk plays in early childhood. (T, Admin, 101)

# Workshop Sessions ~ Nature-Based Preschool

Thursday, August 20th ~ Afternoon

## **Lettuce Learn to Grow and Eat Healthy Food – Garden-Based Nutrition**

**Education in Early Childhood (with Courtney Baines Smith , Lettuce Learn):** A garden can serve as a platform to engage young minds about nutrition during the earliest years of childhood. Learn the benefits of garden-based learning, see examples of successful implementation, hear suggestions of how to succeed, and practice developing your own ideas to incorporate garden-based learning into your program. (T, Admin)

## **Creating & Teaching in Natural Outdoor Classrooms to Enhance Your Program Quality, Effectiveness and Add More Joy (with Susan Wirth, Dimensions Educational Research Foundation):**

This session will feature information gleaned from research on outdoor learning environments. Get strategies for implementing changes to boost family involvement and involve children in co-creating learning spaces while effectively meeting your own curriculum objectives. Leave with evidence-based, cost-effective solutions for creating and sustaining nature-rich environments supported by research/resources. (T, Admin, 101)

## **How To Write A Business Plan for Your Nature-Based Preschool (with David Catlin, Catlin Consulting, LLC & Rachel Larimore, Chippewa Nature Center):**

Passionate educators sometimes look on their nature-based preschool as a ministry of sorts, but it's also a business. This session, especially designed for institutions contemplating the development of a new preschool, examines how you can establish something that is financially sustainable while at the same time not losing sight of your mission and dreams. (101)

## **How Do Academics Fit in Nature Play? (with Tisha Luthy, Cincinnati Nature Center):**

We know nature play is important, and parents want to know where academics fit in a nature-based preschool. Come to find out what the standards look like. (T, Admin)

## **A Place for Permaculture and Natural Building In Nature-Based Preschools (with Deb Carter, Boise State University):**

This session will share examples of nature-based projects inspired by natural building and permaculture principles. Emphasis will be placed on aligning projects with the developmental needs of young children as well as promoting environmental literacy. Participants will discuss the value of natural building and permaculture principles for nature-based preschools. (T, Admin)

## **Get Your Nature Preschool 101 Questions Answered (facilitated by Patti Bailie, Rachel Larimore, Shelia Williams Ridge & Elise Hansen):**

Interested in what a Nature-Based Preschool is all about? Join us for an informative round table discussion. Bring Your Questions.



# Field Trips ~ Pre-Summit

Wednesday, August 19th

## **Mountain Biking Outside Helen, Georgia** – Woody’s Mountain Bikes

Cost: \$75 # of spots: 12 Departs hotel: 8:30 am

Woody’s will fit you on a bike, supply a helmet, load you up in their shuttle vehicle, and take you up the mountain to drop you off. From there you’ll ride back to Woody’s, self-guided at your own pace through the National Forest on an unpaved U.S. Forest Service road. You’ll see waterfalls including Horse Trough Falls-the headwaters of the Chattahoochee River, beautiful National Forest and a wide variety of nature, wildlife, and wildflowers. It’s a 14-mile ride, about 65% downhill and takes anywhere from 2 to 5 hours to ride – depending on how hard you work and how often you stop and enjoy the sights.

## **Lake Lanier Houseboat Ride** – Elachee Nature Science Center

Cost: \$20 # of spots: 20 Departs hotel: Noon

Participants will get a tour of the lake, including Lake Lanier Islands, Buford Dam, and other attractions on a 100’ house boat. There will be opportunities for swimming and picnicking. The boat has both outdoor and air conditioned spaces. Elachee will provide water; BYOB and snacks.

## **Paddle Boarding on Lake Lanier** – Energy Water Sports

Cost: \$60 # of spots: 10

Departs hotel: Noon

Stand Up Paddle at Atlanta’s Beach Playground. Experience the sensation of gliding across the calm clear water in beautiful Sunset Cove at Lake Lanier Islands. Energy Water Sports has been outfitting paddlers for over 5 years. They’ve instructed hundreds of people in stand up paddleboarding and have the knowledge, equipment, and location to offer a 5 star resort outing to everyone from beginner to serious enthusiast.

- All trips will return to hotels by 4pm
- A minimum number of participants is required





# Field Trips ~ Post-Summit

Sunday, August 23rd

**Birding and Boating up the Chattahoochee River** – Elachee Nature Science Center  
Cost: \$20 # of spots: 20 7:30am - Noon

Ride Chattahoochee Riverkeeper's Chota Princess II catamaran to look for eagles, osprey, wading birds, and other migrants that might be visiting.

**Chattooga River Rafting** – Nantahala Outdoor Center  
Cost: \$145 # of spots: 10 6:30am - 5pm

This is it, the South's definitive whitewater rafting experience. Because it's so rich in natural beauty, river running lore, and iconic rapids, *Southern Living* magazine ranks Chattooga River rafting as the "#1 Thing Every Southerner Ought to Do." NOC's elite Chattooga team will guide you through the rapids, provide a memorable riverside lunch, and interpret a number of natural landmarks including majestic Long Creek Falls.

**Explore Dahlonega, Georgia Through Canoeing/Kayaking and Gold Mining** – Appalachian Outfitters/Consolidated Gold Mines  
Cost: \$75 # of spots: 10 8am - 6pm

Part 1: The Chestatee River flows from the foothills of Dahlonega through the former home of the Cherokee. When gold-hungry settlers flooded the region, the tribe was forced west of the river and then marched on the infamous Trail of Tears. After the gold fever subsided the river was returned to its natural state and has become a popular destination for those looking to take a break from the frantic pace of everyday life.

This Chestatee River trip downstream from Appalachian Outfitters is their most popular trip especially for first-time canoers and kayakers, families, and large groups. There are several fun but gentle rapids, great scenery, and good fishing. Distance: 6 miles (average 2½ hours). Difficulty: Beginner (Class 1). Highlights: gentle rapids, rock cliffs, secluded beaches, fishing, and lots of COOL swimming holes!

Part 2: Travel 200 feet underground and 100 years back in time! Enjoy a 40-minute underground, interactive exploration of a REAL mine with one of Consolidated's friendly and knowledgeable staff members. As you descend, hear tales of miner's struggles to uncover gold deep within large quartz veins and gather challenges of the profession. After the tour, try your hand at gold panning, receiving instructions from some of the best panners in the world. Hopefully you'll strike it rich!



# Georgia on My Mind ~ Travel Guide

## While You Are Here

Stunning scenery amid North Georgia's gentle peaks and rushing waters makes this region a natural paradise for visitors.

Our area of Georgia offers an exciting array of things to do, see and enjoy if you plan to arrive early or extend your stay in our beautiful region. Here is a sampling of just some of the options. Also visit the major visitor sites listed below to explore more ideas.

Remember that the weather in Gainesville and Georgia in August can be quite warm and humid = hot! With some luck, we might have evenings that are a bit cooler and good ol' thunderstorms also can cool things off. So be sure to dress for the weather. Most sites are tourist-friendly and casual summer attire is acceptable. We would be shocked if you needed a sweater, but bring one just in case, especially for AC or if you are headed to the mountain regions.

## Main travel and tourism sites for our area:

Georgia Travel and Tourism – [www.exploregeorgia.org](http://www.exploregeorgia.org)

Lake Lanier Convention and Visitors Bureau – [www.discoverlakelanier.com](http://www.discoverlakelanier.com)

City of Gainesville Tourism – [www.gainesville.org/tourism](http://www.gainesville.org/tourism)

## Close to Elachee Nature Science Center

Hike our 12+ miles of trails from a ½ mile handicapped accessible to several 1 mile woodland loops, and a 2½ mile round trip to Chicopee Lake and back.

– [www.elachee.org](http://www.elachee.org)

Bike the 22 miles of mountain bike trails, beginners to advanced

– [sorba.org/Chapters](http://sorba.org/Chapters), Northeast Georgia Chapter

Golf within the park, 27 holes – [www.chicopeewoodsgolfcourse.com](http://www.chicopeewoodsgolfcourse.com)

Walk, Bike, or Roller Blade on the nearby Hall County Multi-Use Trail



## In Our Immediate Area

Northeast Georgia History Museum – [www.negahc.org](http://www.negahc.org)

Quinlan Visual Arts Center  
– [www.quinlanartscenter.org](http://www.quinlanartscenter.org)

Lake Lanier Islands  
– [www.exploregeorgia.org/listing/2847-lake-lanier-islands-resort](http://www.exploregeorgia.org/listing/2847-lake-lanier-islands-resort)

North Georgia Canopy Tours  
– [www.northgeorgiacanopy-tours.com](http://www.northgeorgiacanopy-tours.com)

Atlanta Botanical Garden  
Gainesville

– [www.atlantabg.org/visit/gainesville](http://www.atlantabg.org/visit/gainesville)

# Georgia on My Mind ~ Travel Guide

## Atlanta Area

Georgia Aquarium

– [www.georgiaaquarium.org](http://www.georgiaaquarium.org)

Imagine It Children's Museum

– [www.childrensmuseumatlanta.org](http://www.childrensmuseumatlanta.org)

Atlanta History Center

– [www.atlantahistorycenter.com](http://www.atlantahistorycenter.com)

High Museum of Art

– [www.high.org](http://www.high.org)

Gone With the Wind/Margaret Mitchell House

– [www.atlantahistorycenter.com](http://www.atlantahistorycenter.com)

Stone Mountain Park

– [www.stonemountainpark.com](http://www.stonemountainpark.com)

Martin Luther King Jr. Memorial and Ebenezer Baptist Church

– [thekingcenter.org/plan-your-visit](http://thekingcenter.org/plan-your-visit)



## Surrounding Areas

Currahee Military Museum – Tocca, GA – [www.toccoahistory.com/exhibits.html](http://www.toccoahistory.com/exhibits.html)

Tallulah Gorge State Park – Tallulah, GA

– [www.aboutnorthgeorgia.com/ang/Tallulah\\_Gorge\\_State\\_Park](http://www.aboutnorthgeorgia.com/ang/Tallulah_Gorge_State_Park)

Appalachian Trail – Bryan Reese trailhead, Walasi-Yi at Neel's Gap

– [www.georgiatrails.com/gt/byron\\_herbert\\_reece\\_access\\_trail](http://www.georgiatrails.com/gt/byron_herbert_reece_access_trail)

Panning for Gold in Dahlonega, GA – Consolidated Gold Mine, Dahlonega, GA

– <http://consolidatedgoldmine.com/>

Canoe on the Chestatee River – Appalachian Outfitters, Dahlonega, GA

– [www.canoegeorgia.com/](http://www.canoegeorgia.com/)

Downtown Dahlonega, traditional southern town square

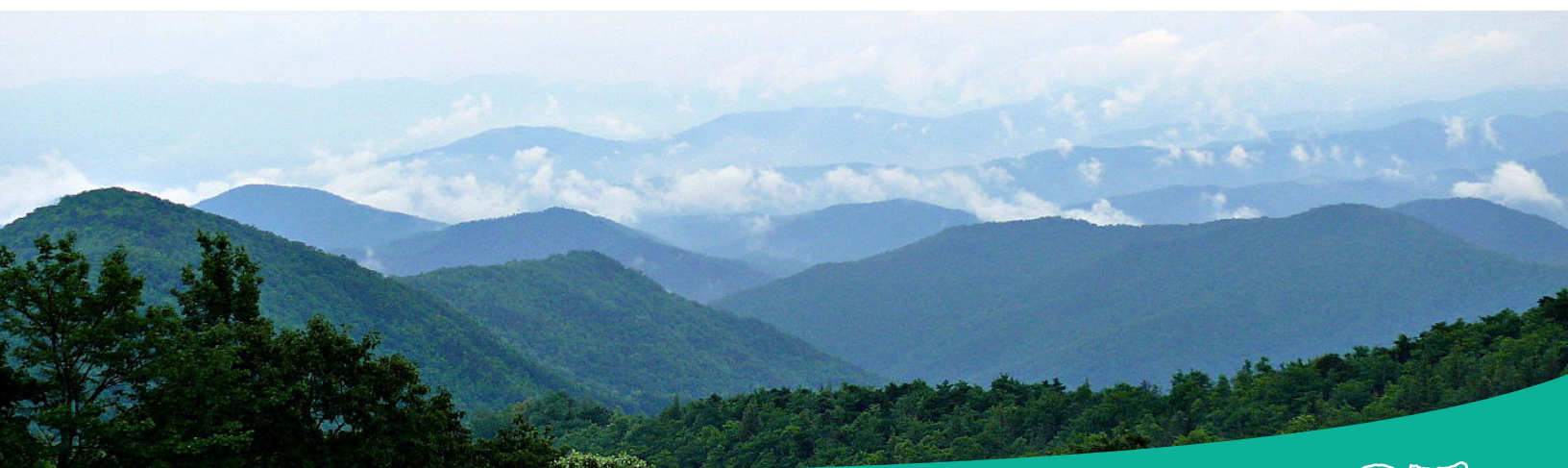
– [dahlonega.org/see-do/historic-downtown](http://dahlonega.org/see-do/historic-downtown)

Winery Tours – Frogtown, 3 Sisters, and Wolf Mountain Wineries

– [www.georgiawinetours.com/wineries.html](http://www.georgiawinetours.com/wineries.html)

Georgia State Parks at Unicoi/Anna Ruby Falls, Amicolola State Park, Smithgall Woods

– <http://gastateparks.org/hiking>



# About ~ the Association of Nature Center Administrators



The Association of Nature Center Administrators is a private non-profit organization founded in 1989 to provide a professional association for nature and environmental learning center leadership. In support of our mission, to promote and support best leadership and management practices for the nature and environmental learning center profession, we provide programs and services to 600 members from throughout North America and a few other countries.

## **Member benefits include:**

- ANCA's quarterly newsletter, *Directions*, provides helpful information, commentary, and tips on all aspects of environmental learning center management.
- Discounts on ANCA's annual Summit, other workshops, and special products such as the *Director's Guide to Best Practices*.
- Access to membership information, including results from ANCA market studies, membership questionnaires, surveys, etc.
- Access to the Member's Only area of the website where you will find past issues of *Directions*, sample documents and policies from member organizations, and resources from past Summits.
- A personal network of highly skilled and experienced leaders who are willing to share their learning and expertise.
- Free job postings on the ANCA website.
- The ANCA Mentor Program pairs mentees needing assistance with experienced mentors.
- A voice for the profession, representing the needs and benefits of nature centers to government agencies, funding sources, and other professional networks.



Rooted in Experience  Reaching for Excellence

*Association of Nature Center Administrators  
Natural Connections ~ Summit XXI ~ Elachee Nature Science Center*